

GROUND FLOOR LEVEL

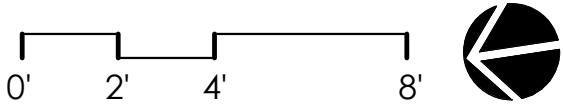
1/8" = 1'-0"

**NOTE:** THESE ARE EXISTING CONDITION RECORD DRAWINGS. THE DIMENSIONS REPRESENTED ARE FOR REFERENCE ONLY AND ARE NOTED AS CONDITIONS ALLOWED. THE BUILDING AND STRUCTURAL ELEMENTS SHOWN ARE NOTED AS OBSERVED ON-SITE.

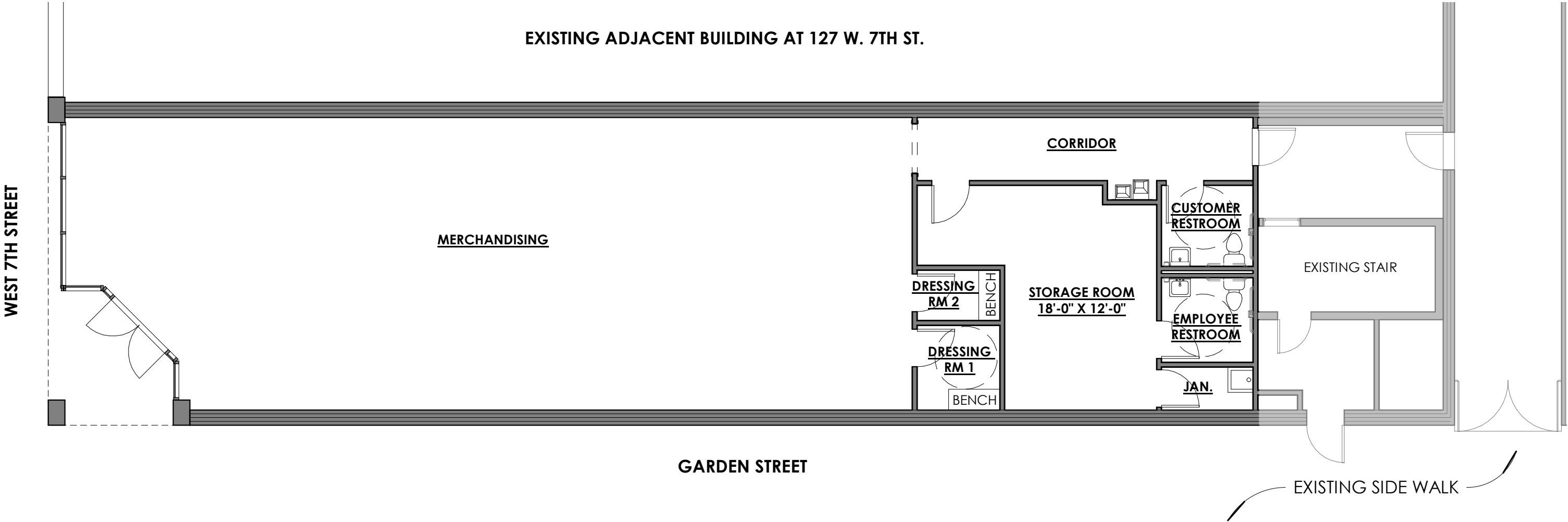
EXISTING CONDITIONS



AUGUST 7, 2019



EXISTING ADJACENT BUILDING AT 127 W. 7TH ST.



SCHEMATIC LAYOUT

1/8" = 1'-0"