



listen • think • create  
This drawing and the design shown is the property of the Architect. The reproduction, copying, or use of this drawing without their written consent is prohibited and any infringement will be subject to legal action.

**b3 studio inc.**  
1587 mallory lane, suite 175 | brenwood, tn 37027 | www.b3studio.com

consultants:

project:

cool springs east | 310 billingsly  
shell office & 2nd floor tenant | cdf project #28-40

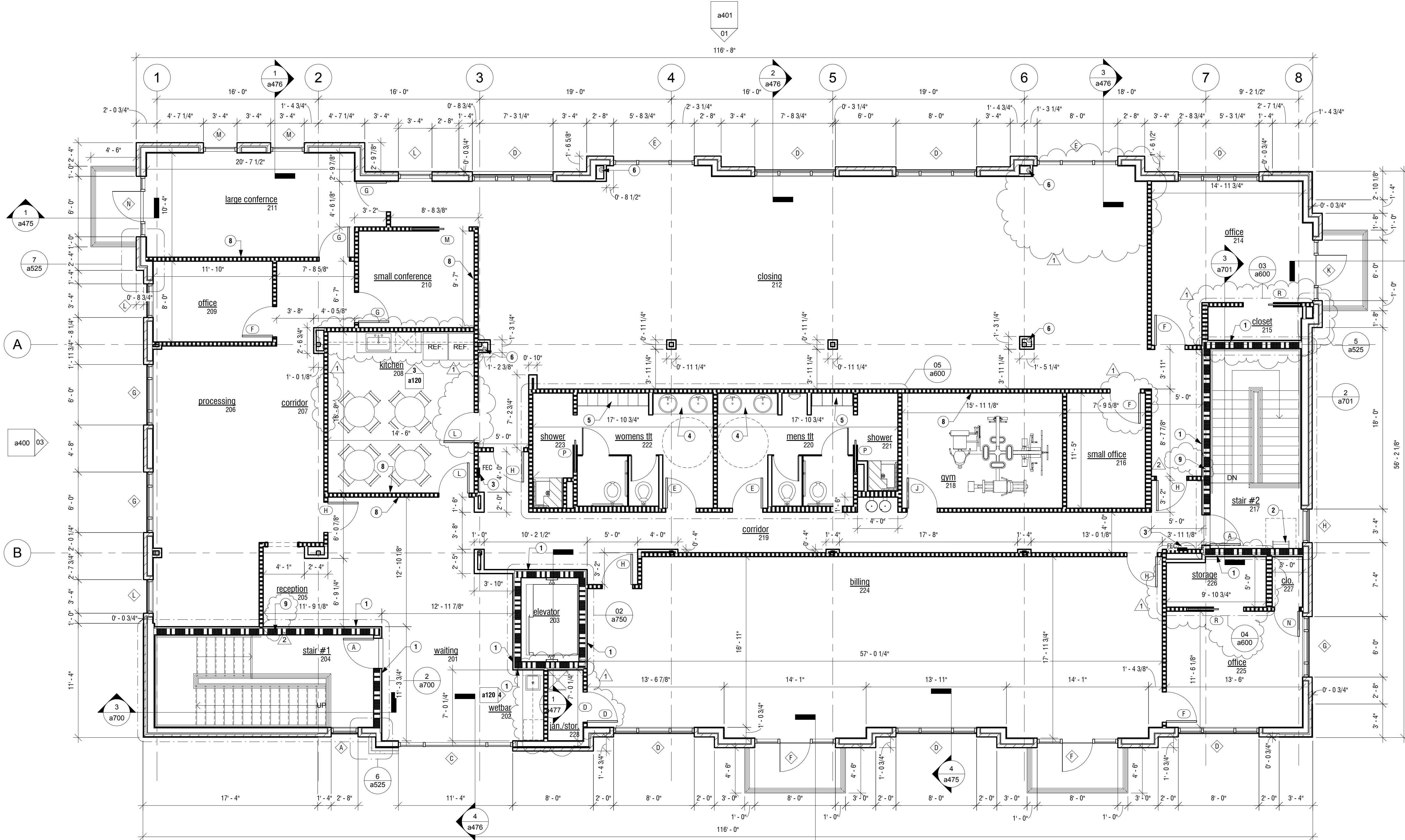
revisions:

- add #1 - 11.27.13

date: 08 october 2013  
project no.: a13041.00

second floor  
noted & dim  
plan

a120



### symbols

- NEW WINDOW (TYPE A) - REFER TO SHEET A575.
- NEW DOOR (TYPE A) - REFER TO SHEET A575.
- SURFACE MOUNTED FIRE EXTINGUISHER CABINET.
- EXTERIOR ELEVATION.

### general notes

- 1. REFER TO SHEET A575 FOR EXTERIOR WINDOW TYPES
- 2. REFER TO SHEET A576 FOR DOOR TYPES AND DOOR SCHEDULE.

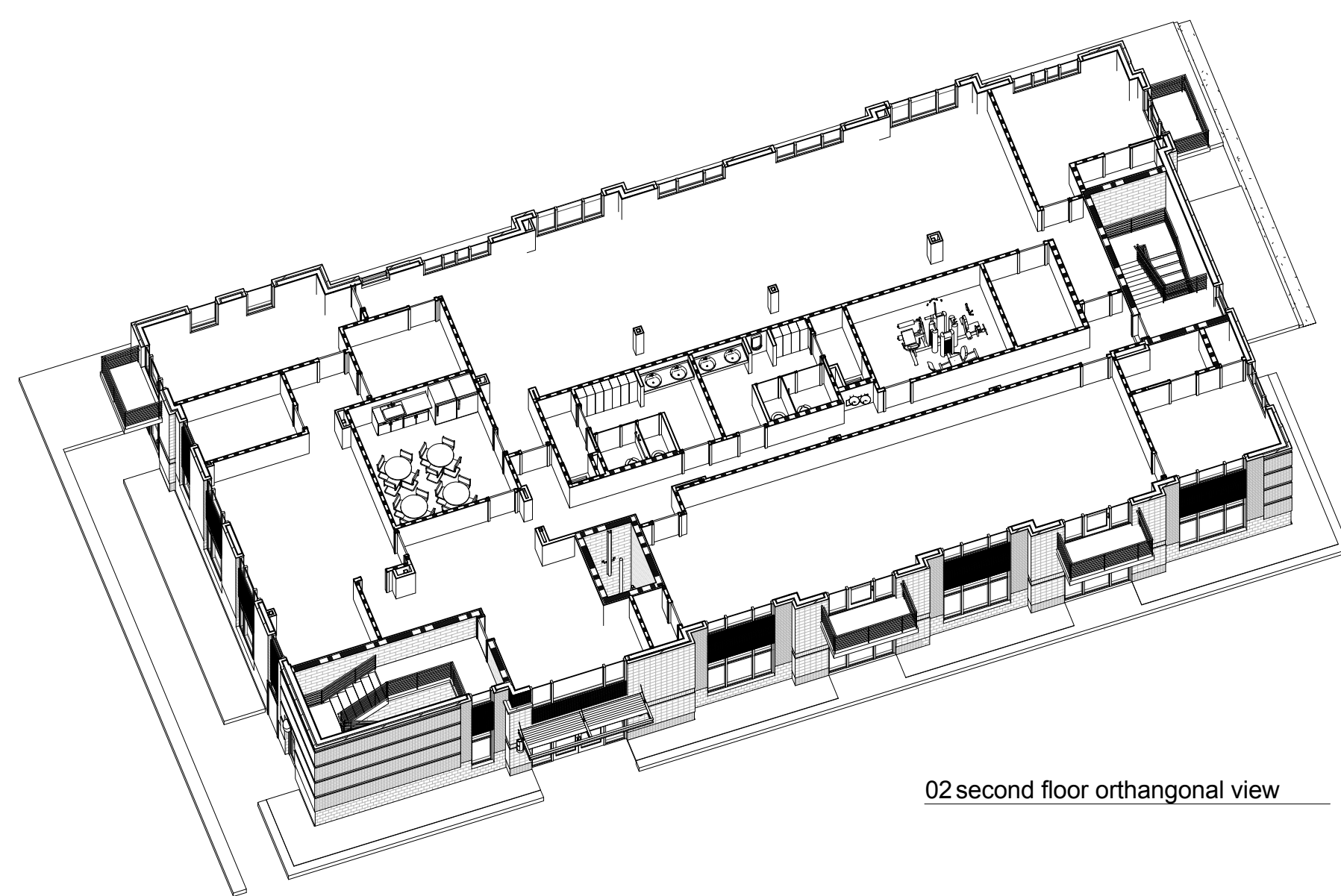
### plan notes

- 1) 5/8" GYP. OVER 1-1/2" HAT CHANNEL.
- 2) ROOF ACCESS HATCH & LADDER - REFER TO SHEET A300.
- 3) RECESSED FIRE EXTINGUISHER CABINET - REFER TO DETAIL 03/G210.
- 4) LAVATORY CASEWORK - REFER TO DETAIL 04/A800.
- 5) LOCKERS - OWNER TO COORDINATE SELECTION & INSTALLATION W/ CONTRACTOR.
- 6) 6" RAIN WATER LEADER - REFER TO PLUMBING.
- 7) 8-1/4" STRUCTURALLY INSULATED PANEL - REFER TO STRUCTURAL.
- 8) ELEC. CABLE AT 5'-6" AFF. PROVIDE WOOD BLOCKING FOR TV MOUNT.
- 9) ONE HOUR COMPOSITE PANEL ASSEMBLY - REFER TO DETAIL 4/A100.

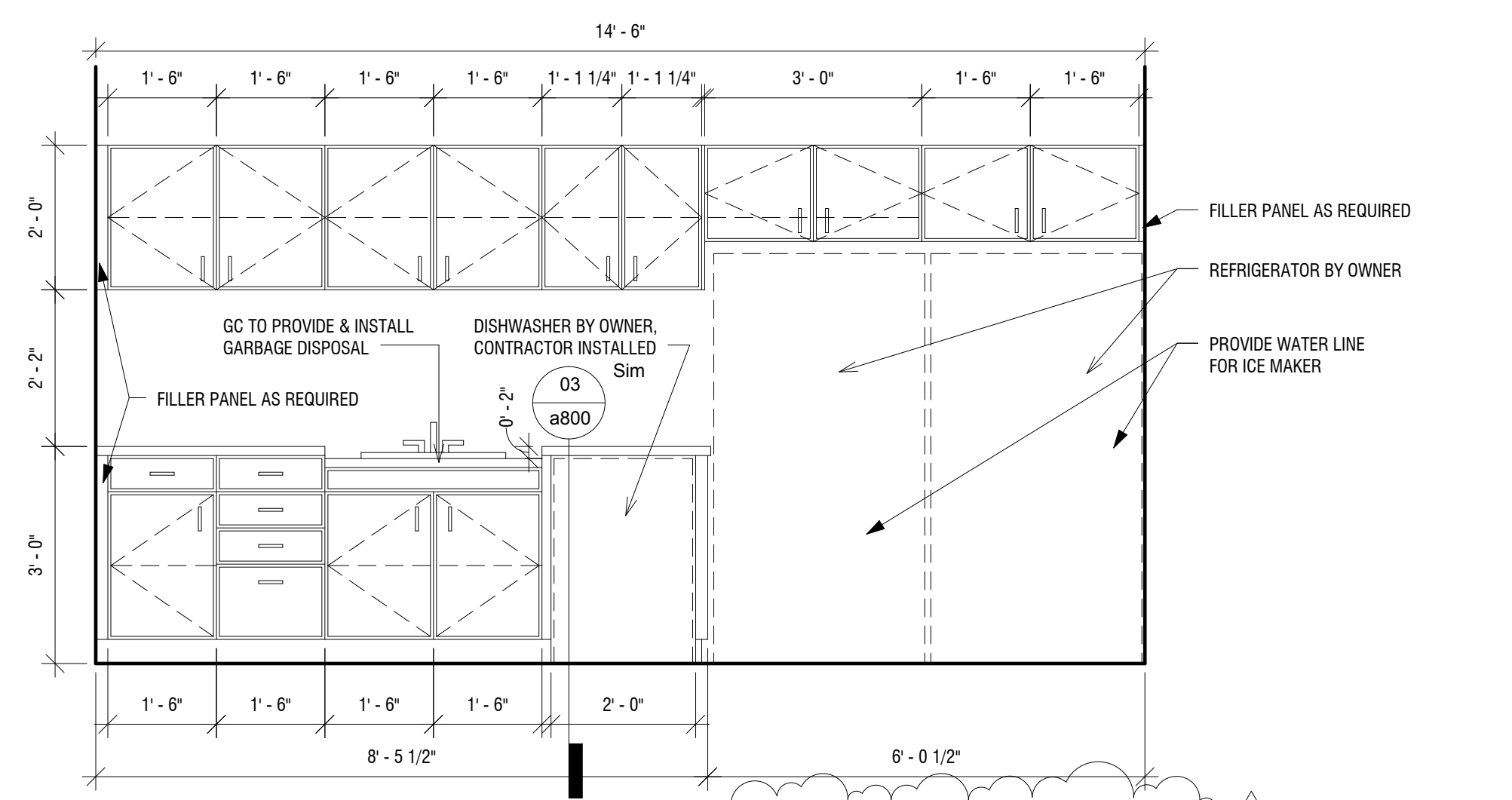
### wall legend

- NEW CONSTRUCTION
- NON-RATED PARTITION - SEE DETAIL 01/G150
- SOUND PARTITION - SEE DETAIL 02/G150
- 1 HOUR RATED PARTITION - SEE DETAIL 03/G150
- 1 HOUR RATED CMU PARTITION W/ 1-1/2" HAT CHANNEL & 5/8" GYP. - SEE DETAIL 04/G150
- 1 HOUR RATED COMPOSITE PANEL PARTITION W/ 1-1/2" HAT CHANNEL & 5/8" GYP. - SEE DETAIL 04/A110

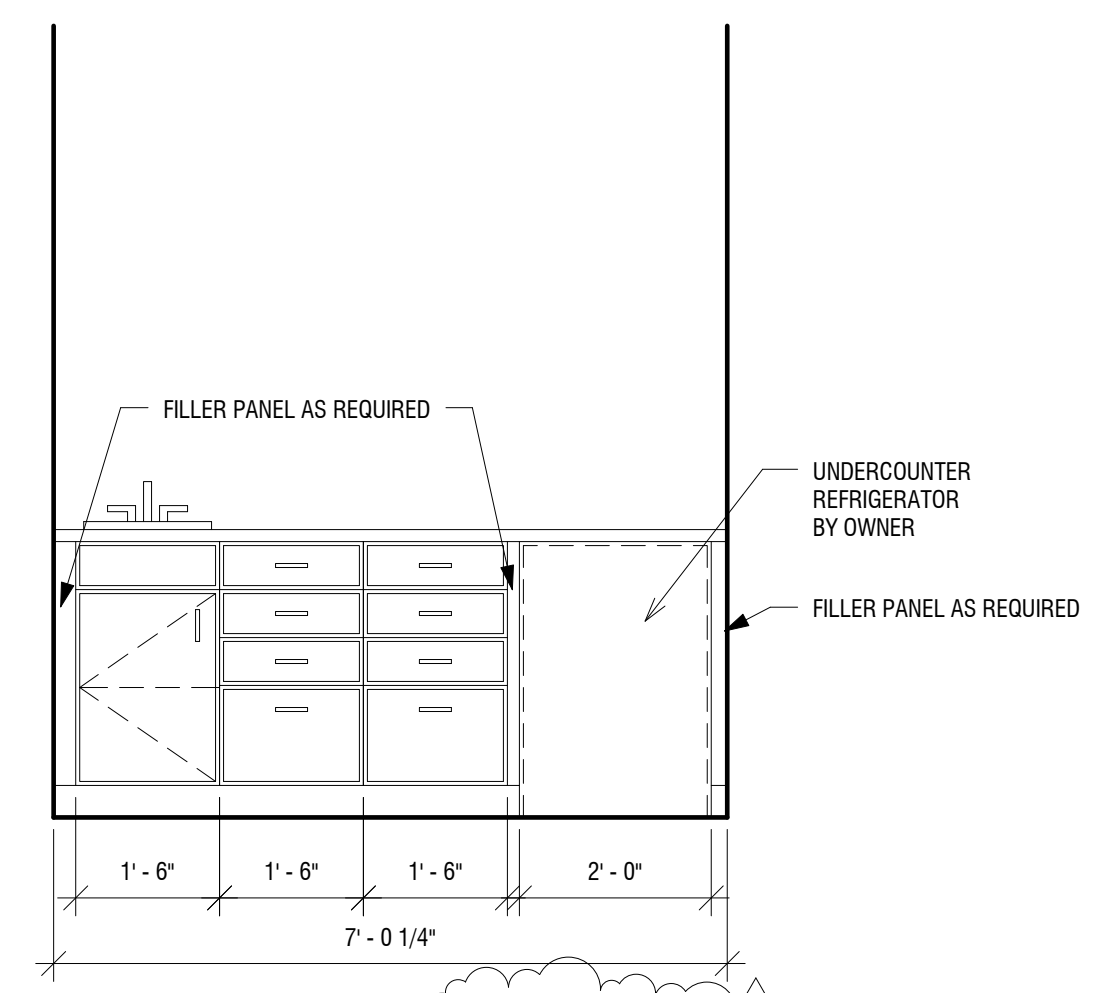
01 second floor noted & dimensioned plan  
3/16" = 1'-0"



02 second floor orthogonal view



03 kitchen casework  
1/2" = 1'-0"



04 wetbar  
1/2" = 1'-0"

revisions:  
add #1 - 11.27.13  
date: 08 october 2013  
project no.: a13041.00  
second floor  
noted & dim  
plan  
a120